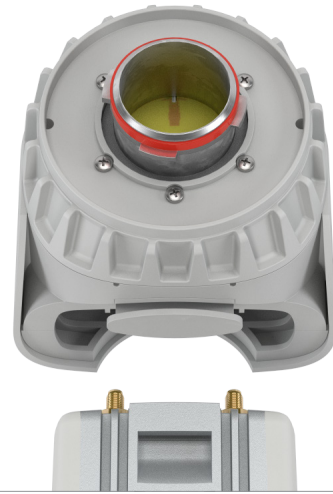


TwistPort™ Adaptor V2 for ePMP 1000

ADAPTOR FOR EPMP™ 1000 AP OR CSM

TwistPort™ Adaptor V2 introduces
wide frequency range of operation: 5180 - 6400 MHz!

The TwistPort Adaptor V2 for ePMP™ 1000 AP and CSM, ePMP™ 3000L AP and ePMP™ Force 300 CSM series is compatible with all TwistPort™ Antennas. TwistPort™ Adaptors are equipped with our original quick-locking waveguide port. Connecting and disconnecting the radio into the TwistPort™ Adaptor V2 is very simple and requires no tools.



TECHNICAL DATA

Antenna Connection	TwistPort™ - Quick Locking Waveguide Port
Radio Connection	2x Slide-On RP-SMA
Materials	Insert - Aluminium Alloy Adaptor - UV stabilized and weather resistant ABS plastic
Flame Rating	UL 94 HB
Temperature	-40°C to +60°C (-40°F to +140°F)
Wind Survival	160 km/h
Weight	0.4 Kg / 0.9 lbs – single unit 0.5 Kg / 1.1 lbs – single unit incl. package 11.2 Kg / 24.7 lbs – carton (20 units)
Single Unit	Retail Box: 13 x 12 x 13.5 cm
20 Units	Carton Box: 29.5 x 28 x 61 cm

PERFORMANCE

Frequency Range	5180 - 6400 MHz
Polarization	Dual Linear H + V
VSWR Max	1.8
Impedance	50 Ohm

COMPATIBLE WIRELESS PLATFORMS

RF elements®	any TwistPort™ Antenna
Cambium Networks™	ePMP™ 1000 AP, ePMP™ 1000 CSM, ePMP™ 3000L AP, ePMP™ Force 300 CSM

PACKAGE CONTENTS

TwistPort™ Adaptor

PRODUCT DIMENSIONS

