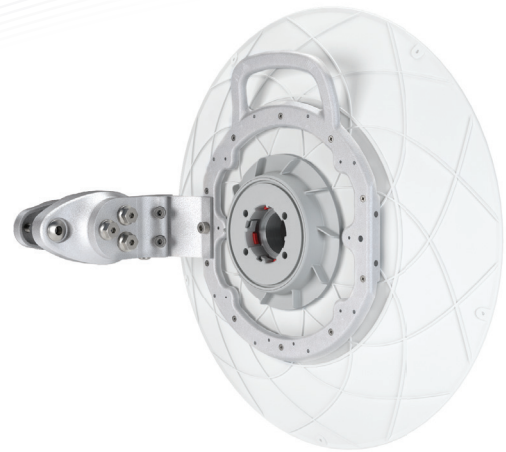


UltraDish™ TP 380

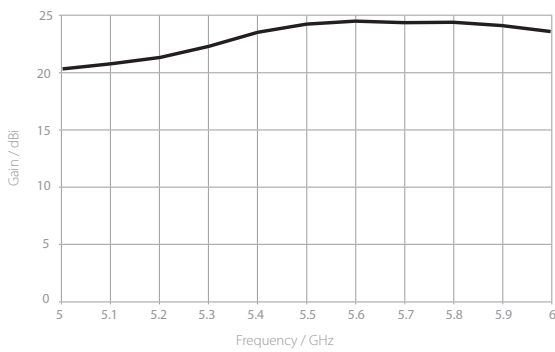
DIRECTIONAL PARABOLIC DISH ANTENNA WITH TWISTPORT™ CONNECTOR

UltraDish™ TP 380's are designed for CPE or PtP connections. The antenna reflector is made of die-cast aluminum to ensure a very uniform shape. Our virtually lossless TwistPort™ connector guarantees easy radio deployment and maintenance.

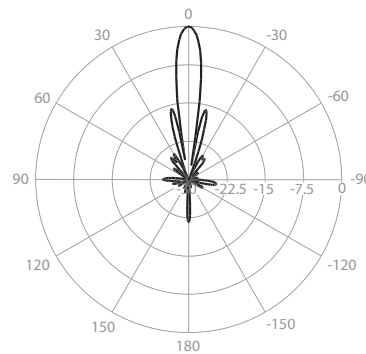
Antenna installation is extremely easy and ensures rapid deployment for large scale projects. Our innovative antenna mount fits a wide range of pole diameters and can be easily swapped for right or left side mounts. A single HEX tool is all you need to perform your installation.



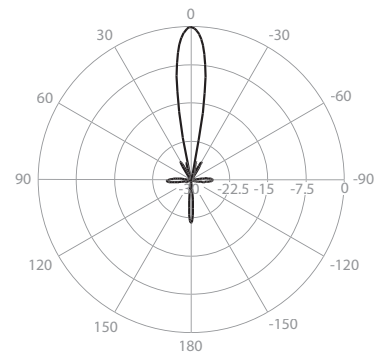
Gain H



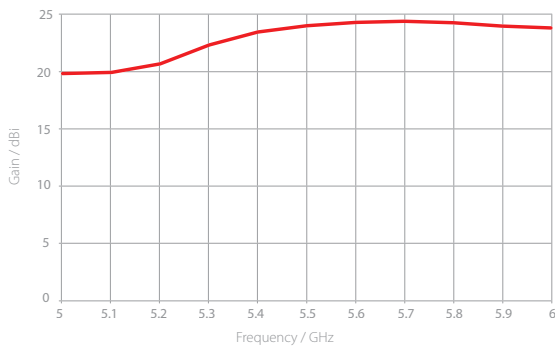
Azimuth Pattern H



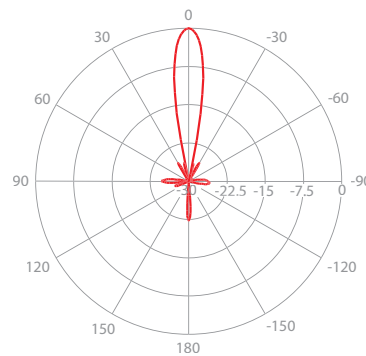
Elevation Pattern H



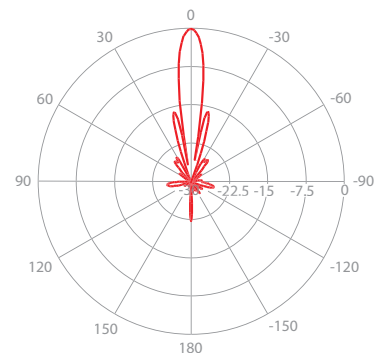
Gain V



Azimuth Pattern V



Elevation Pattern V



PHYSICAL

| | |
|------------------------|--|
| Antenna Connection | TwistPort™ - Quick Locking Waveguide Port |
| Antenna Type | Parabolic Dish |
| Environmental | IP65 |
| Pole Mounting Diameter | 15-86 mm |
| Temperature | -40 to +60 °C (-40°F to +140°F) |
| Wind Survival | 160 Km/h |
| Weight | 2.3 Kg / 5 lbs – single unit 2.9 Kg / 6.4 lbs – single unit incl. package |
| Single Unit | Retail Box: 46.5 x 43 x 12 cm |

PERFORMANCE

| | |
|----------------------------|---------------|
| Gain | 24 dBi |
| Azimuth Beam Width -6 dB | H 12° / V 12° |
| Elevation Beam Width -6 dB | H 12° / V 12° |
| Azimuth Beam Width -3 dB | H 8° / V 8° |
| Elevation Beam Width -3 dB | H 8° / V 8° |
| Front-to-Back Ratio (Min) | 24 dB |

COMPATIBLE WIRELESS PLATFORMS

any TwistPort™ Adaptor with TwistPort™ connector

any SIMPER™ Radio with TwistPort™ connector

PRODUCT DIMENSIONS

