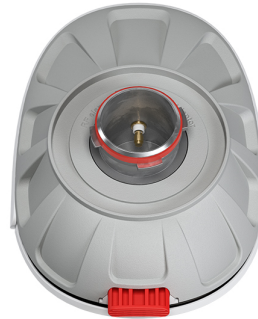


# UltraDish™ TP 21

# TPA for PAF

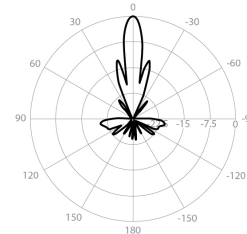


## PERFORMANCE

### UD-TP-21

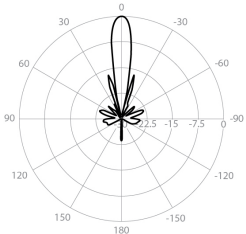
Gain	21.2 dBi
Frequency Range	5180 - 6775 MHz
Azimuth Beam Width -6 dB	H 14° / V 13°
Elevation Beam Width -6 dB	H 13° / V 14°
Beam Efficiency	30%
Front-to-Back Ratio (Min)	28 dB
<b>TPA-PAF</b>	
Polarization	Dual Linear H + V
Impedance	50 Ohm

Azimuth Pattern H



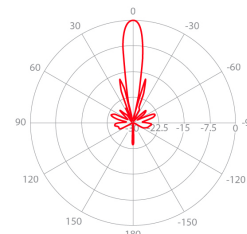
H - Port Pattern Azimuth 5.6 GHz

Elevation Pattern H



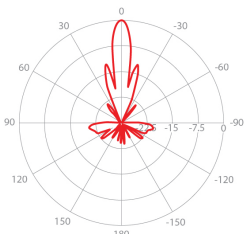
H - Port Pattern Elevation 5.6 GHz

Azimuth Pattern V



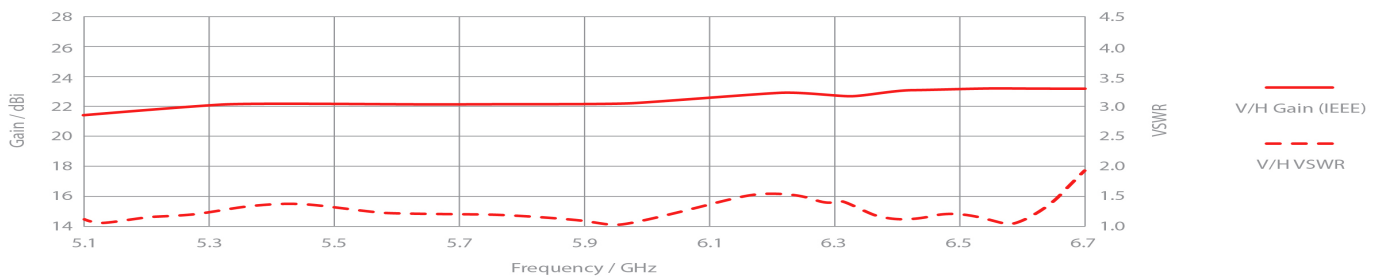
V - Port Pattern Azimuth 5.6 GHz

Elevation Pattern V



V - Port Pattern Elevation 5.6 GHz

## REALIZED GAIN AND VSWR



## NOMINAL GAIN

