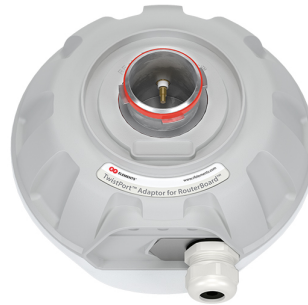


# UltraDish™ TP 27

# TPA RBC



## PERFORMANCE

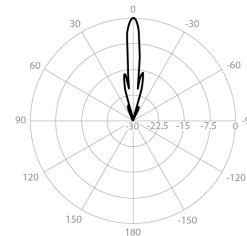
### UD-TP-27

|                            |                 |
|----------------------------|-----------------|
| Gain                       | 27.5 dBi        |
| Frequency Range            | 5180 - 6775 MHz |
| Azimuth Beam Width -6 dB   | H 10° / V 9°    |
| Elevation Beam Width -6 dB | H 9° / V 10°    |
| Beam Efficiency            | 61%             |
| Front-to-Back Ratio (Min)  | 37 dB           |

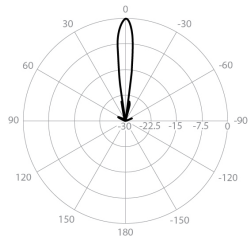
### TPA-RBC

|              |                   |
|--------------|-------------------|
| Polarization | Dual Linear H + V |
| Impedance    | 50 Ohm            |

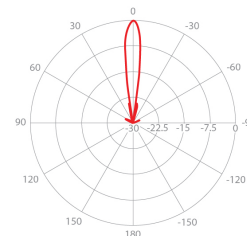
Azimuth Pattern H



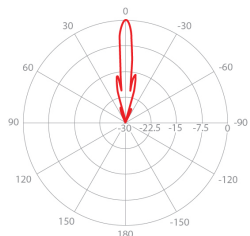
Elevation Pattern H



Azimuth Pattern V



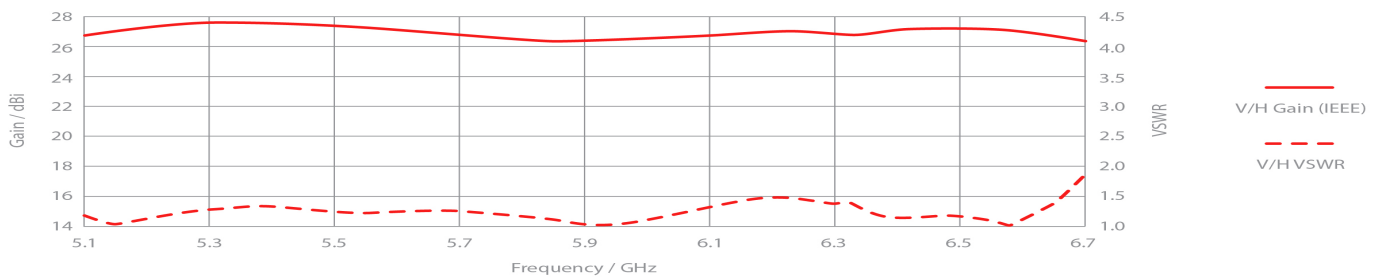
Elevation Pattern V



V - Port Pattern Azimuth 5.6 GHz

V - Port Pattern Elevation 5.6 GHz

## REALIZED GAIN AND VSWR



## NOMINAL GAIN

