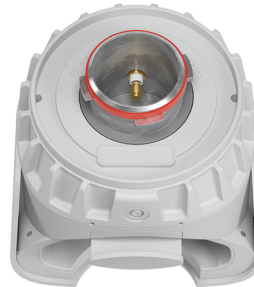


30° Sector HG3-TP-S30

TPA for Rocket M5



PERFORMANCE

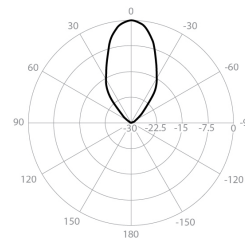
HG3-TP-S30

| | |
|----------------------------|-----------------|
| Frequency Range | 5180 - 6775 MHz |
| Gain | 18.4 dBi |
| Azimuth Beam Width -6 dB | H 30° / V 30° |
| Elevation Beam Width -6 dB | H 30° / V 30° |
| Beam Efficiency | 94% |
| Front-to-Back Ratio | 37 dB |

TPA-RM5

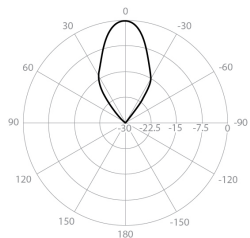
| | |
|--------------|-------------------|
| Polarization | Dual Linear H + V |
| Impedance | 50 Ohm |

Azimuth Pattern H



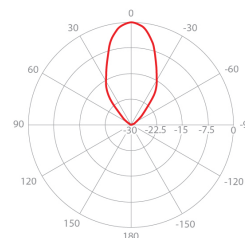
H - Port Pattern Azimuth 5.6 GHz

Elevation Pattern H



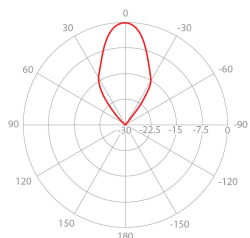
H - Port Pattern Elevation 5.6 GHz

Azimuth Pattern V



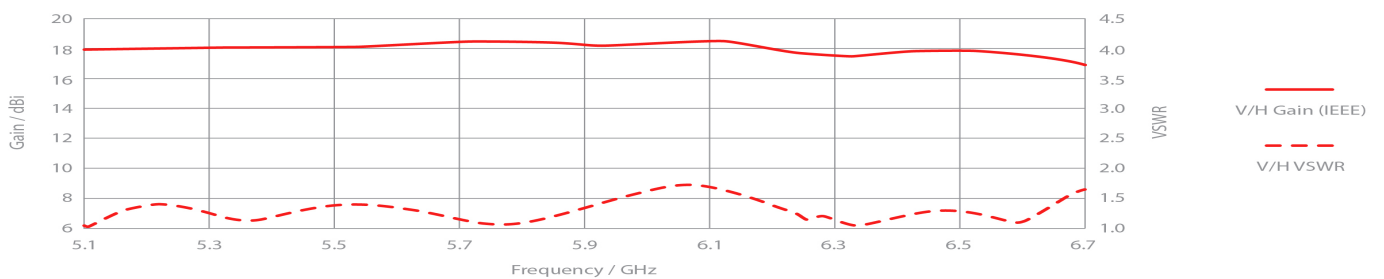
V - Port Pattern Azimuth 5.6 GHz

Elevation Pattern V



V - Port Pattern Elevation 5.6 GHz

REALIZED GAIN AND VSWR



NOMINAL GAIN

