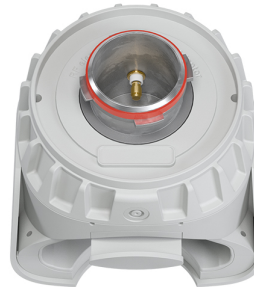


# UltraDish™ TP 21

# TPA for Rocket M5



## PERFORMANCE

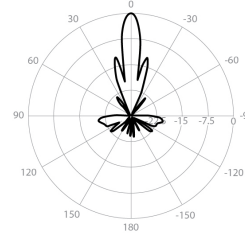
### UD-TP-21

Gain	21.2 dBi
Frequency Range	5180 - 6775 MHz
Azimuth Beam Width -6 dB	H 14° / V 13°
Elevation Beam Width -6 dB	H 13° / V 14°
Beam Efficiency	30%
Front-to-Back Ratio (Min)	28 dB

### TPA-RM5

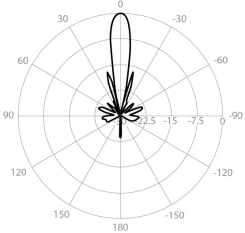
Polarization	Dual Linear H + V
Impedance	50 Ohm

**Azimuth Pattern H**



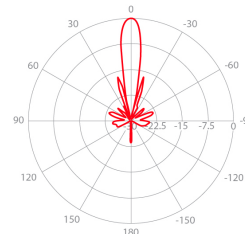
H - Port Pattern Azimuth 5.6 GHz

**Elevation Pattern H**



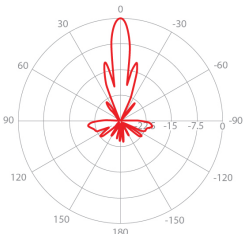
H - Port Pattern Elevation 5.6 GHz

**Azimuth Pattern V**



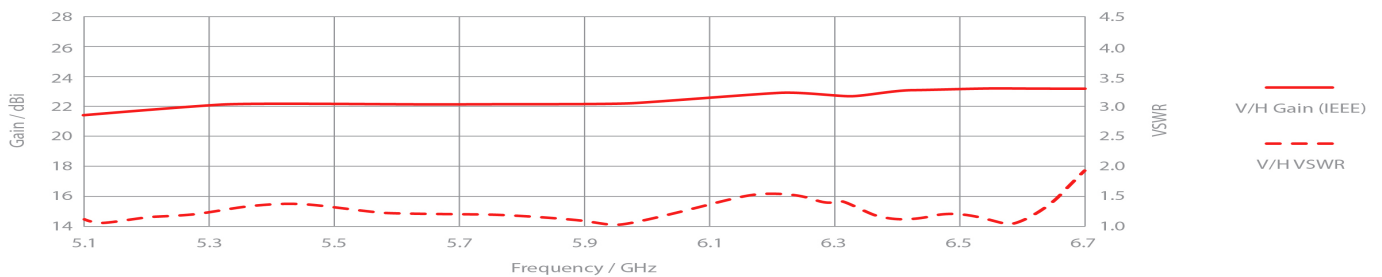
V - Port Pattern Azimuth 5.6 GHz

**Elevation Pattern V**



V - Port Pattern Elevation 5.6 GHz

## REALIZED GAIN AND VSWR



## NOMINAL GAIN

