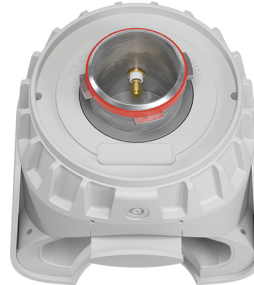


UltraDish™ TP 24

TPA for Rocket 5 AC

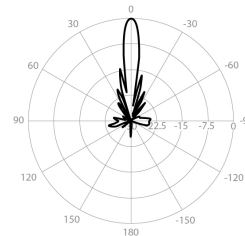


PERFORMANCE

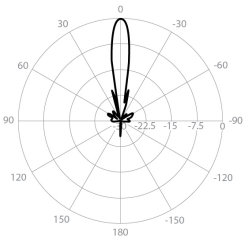
UD-TP-24

Gain	24.4 dBi
Frequency Range	5180 - 6775 MHz
Azimuth Beam Width -6 dB	H 12° / V 11°
Elevation Beam Width -6 dB	H 11° / V 12°
Beam Efficiency	40%
Front-to-Back Ratio (Min)	35 dB
TPA-R5AC	
Polarization	Dual Linear H + V
Impedance	50 Ohm

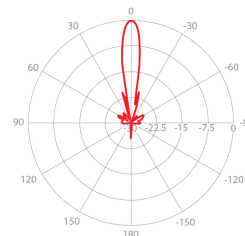
Azimuth Pattern H



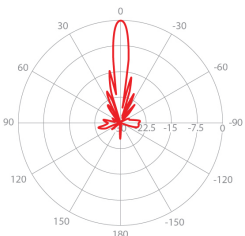
Elevation Pattern H



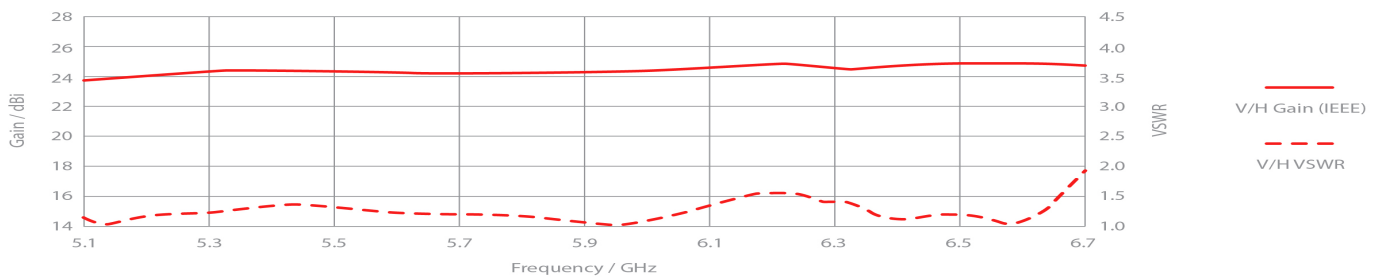
Azimuth Pattern V



Elevation Pattern V



REALIZED GAIN AND VSWR



NOMINAL GAIN

