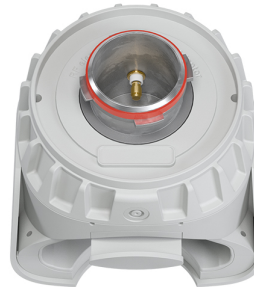


UltraDish™ TP 27

TPA for Rocket 5 AC

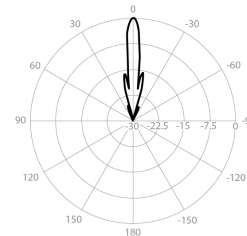


PERFORMANCE

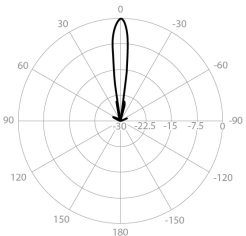
UD-TP-27

Gain	27.5 dBi
Frequency Range	5180 - 6775 MHz
Azimuth Beam Width -6 dB	H 10° / V 9°
Elevation Beam Width -6 dB	H 9° / V 10°
Beam Efficiency	61%
Front-to-Back Ratio (Min)	37 dB
TPA-R5AC	
Polarization	Dual Linear H + V
Impedance	50 Ohm

Azimuth Pattern H



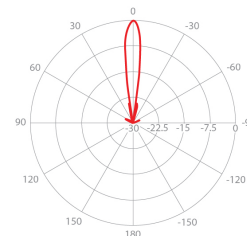
Elevation Pattern H



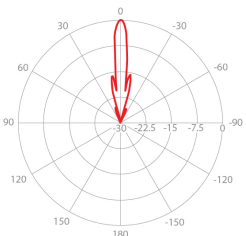
H - Port Pattern Azimuth 5.6 GHz

H - Port Pattern Elevation 5.6 GHz

Azimuth Pattern V



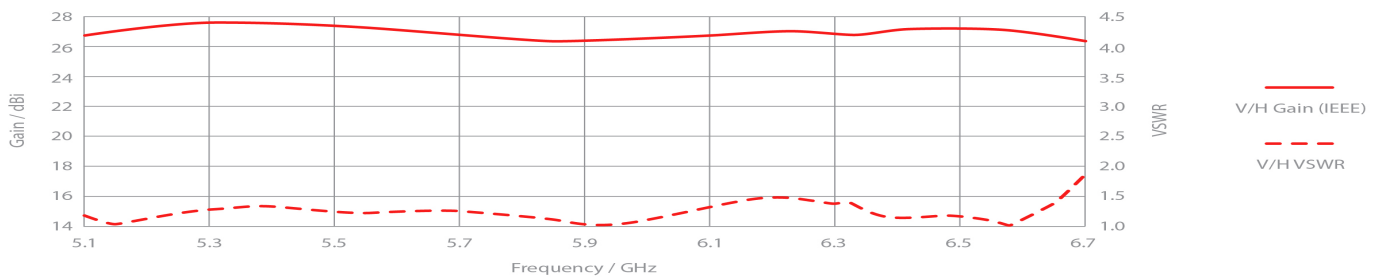
Elevation Pattern V



V - Port Pattern Azimuth 5.6 GHz

V - Port Pattern Elevation 5.6 GHz

REALIZED GAIN AND VSWR



NOMINAL GAIN

